

MABUHAY CORNER



WE WELCOME OUR NEW MABUHAY MEMBERS

Mabuhay recently welcomed four new SEG/Association partners so that more people from our community can benefit from membership. Mabuhay Credit Union® is happy to help support these organizations by sponsoring their events and activities, as well as provide their employees the financial service they need. Our new SEG/Association partners and the number of employees/members that they represent are:



**USC Troy
Philippines
120**



**Cabanatuan City
Association
California, Inc.
360**



**Dreamers &
Visionaries of
South Bay, Inc.
52**



**RED Boxing
International
Promotions
53**

HOLIDAY SCHEDULE

We will be closed on:

Sat. and Mon., May 23 & 25
Fri. and Sat, July 3-4
Sat. and Mon., Sept. 5 & 7

Memorial Day
Independence Day
Labor Day

Even when our branches are closed, you can check your balances, make transfers, pay online and much more through our Remote Access Services.

CONTACT US

NIKKEI BRANCH

18425 S. Western Avenue 2nd Floor
Gardena, CA 90248

Phone: 866.4NIKKEI (866.464.5534)

Email: info@nikkeicu.org

Website: nikkeicu.org

Hours: Monday thru Friday - 9:30am to 5:30pm

Saturday - 9:30am to 1:30pm

MAHUBUHAY BRANCH

146 Carson Street
Carson, CA 90745

Phone: 888.MABUHAY (888.622.8429)

Email: info@mabuhaycu.org

Website: mabuhaycu.org

Hours: Monday thru Friday - 9:30am to 5:30pm

Saturday - 9:30am to 1:30pm

ATM & Shared Branches:

co-opcreditunions.org/locator

NMLS #504681

Routing Number: 322275791

Volunteer

If you are interested in serving as a Credit Union Volunteer, please call the credit union for more details.

f /NikkeiCreditUnion

/MabuhayCU

t @NikkeiCU

@MabuhayCU

ig @NikkeiCU

@MabuhayCU

* Nikkei Credit Union

Mabuhay Credit Union



Federally insured by NCUA. We do business in accordance with the Federal Fair Housing Law and Equal Credit Opportunity Act.

FINANCIAL JOURNAL

SPRING 2020



NIKKEI
credit union



MABUHAY
credit union
A DIVISION OF NIKKEI CREDIT UNION

#Nikkeicares #Mabuhaycares



Nikkei CU CEO with Long Beach City College Counselors receiving donated clothes, blankets and personal hygiene products for their homeless college students.

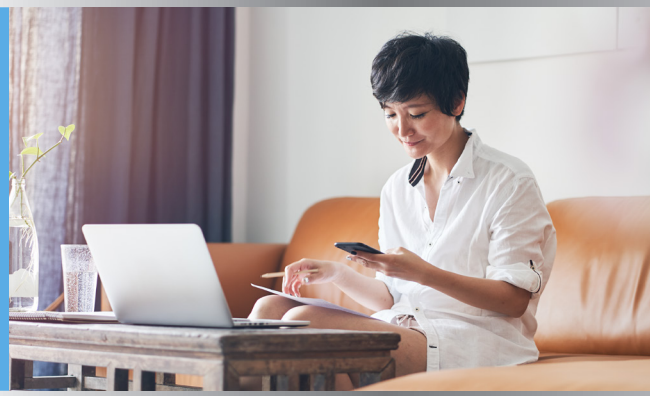
We make a strong effort to help as many people as possible through volunteering and charitable donations. In both of our branches, we have donation bins to collect blankets, clothing, canned food, and personal hygiene products to help homeless students in the South Bay area.

Connect with Taku Hanada at thanada@nikkeicu.org for Nikkei or Fred Docdocil at fredd@mabuhaycu.org for Mabuhay on suggestions on how we can further help our communities.

"Advancing Prosperity for Nikkei and Mabuhay Communities"

WE'RE HERE FOR YOU, WHENEVER AND WHEREVER YOU NEED US.

Our credit union is committed to serving our members, in-person and remotely. The safety and well-being of our members and staff is our top priority, which is why we're proud to offer a wide-range of **remote access services**. These include online banking, mobile banking, text communications, and audio banking. Learn more at www.nikkeicu.org/remote-access.



RELIEF SOLUTIONS SO YOU CAN FOCUS ON THE THINGS THAT MATTER

Nikkei and Mabuhay are offering relief solutions to help make this uncertain time less stressful:

LOAN PAYMENT EXTENSION - Extend your loan payment up to 90 days so you can prioritize your funds where it's needed most. Available for eligible Consumer and Real Estate Loans.

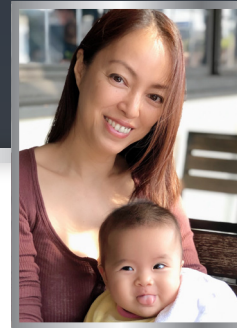
EMERGENCY LOAN - Up to \$3,000 at 7% APR up to 12 months with the first payment due in 90 days for expenses incurred during this crisis.

DEBT PROTECTION - We offer credit disability, credit life and involuntary unemployment protection on qualified vehicle and personal loans.

We are standing by ready to tailor a solution that best suits your needs. Please do not hesitate to reach out to our team members at 866.4NIKKEI (866.464.5534) or 888.MABUHAY (888.622.8429).

Disclosures: Terms and conditions may apply. Emergency Loan only available to those who have been a Nikkei Credit Union member since February 2020. APR=Annual Percentage Rate. All loans are subject to credit review. Rates and terms may change at any time. Contact Credit Union for details.

EMPLOYEE SPOTLIGHT



Meet this quarter's Employee Spotlight, Kaori. You may have been welcomed with her charismatic smile at the branch or had the pleasure to chat with her over the phone. Kaori has been part of the Nikkei family for 6 years. She has definitely made an impact on our member's experience by providing exceptional service in our Loan Department. Here are some fun facts about her:

What do you love most about Nikkei?

Our members because they are polite, kind, and smart with money.

Where is your dream vacation spot?

Yakushima Island, Japan

What is your favorite TV show or movie or novel?

Late Late Show With James Corden, Carpool Karaoke & Street Musical

What special talent do you have?

Japanese Sado, Tea Ceremony

What is your favorite thing to do when not at work?

Being with my two daughters. I enjoy motherhood :)

OUT AND ABOUT



FACC-GLA Gala



Carson PR Commissioners Meeting



NCU MCU Holiday Party



PIDF Planning Meeting

There are several events planned for the Nikkei and Mabuhay communities. Please visit www.nikkeicu.org for a list of upcoming events.

